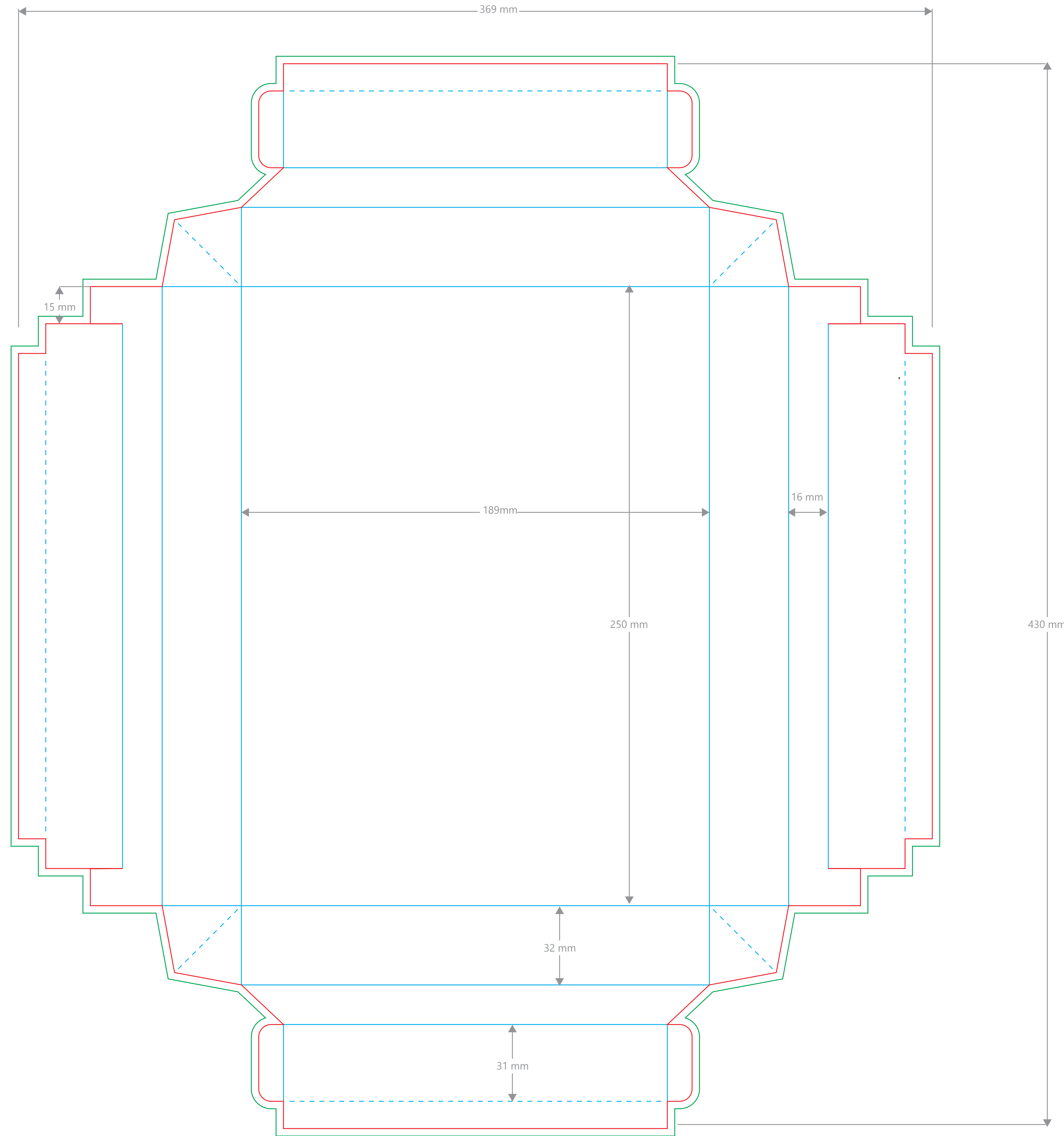


TEMPLATE FOR TRUFFLE ADVENT CALENDAR

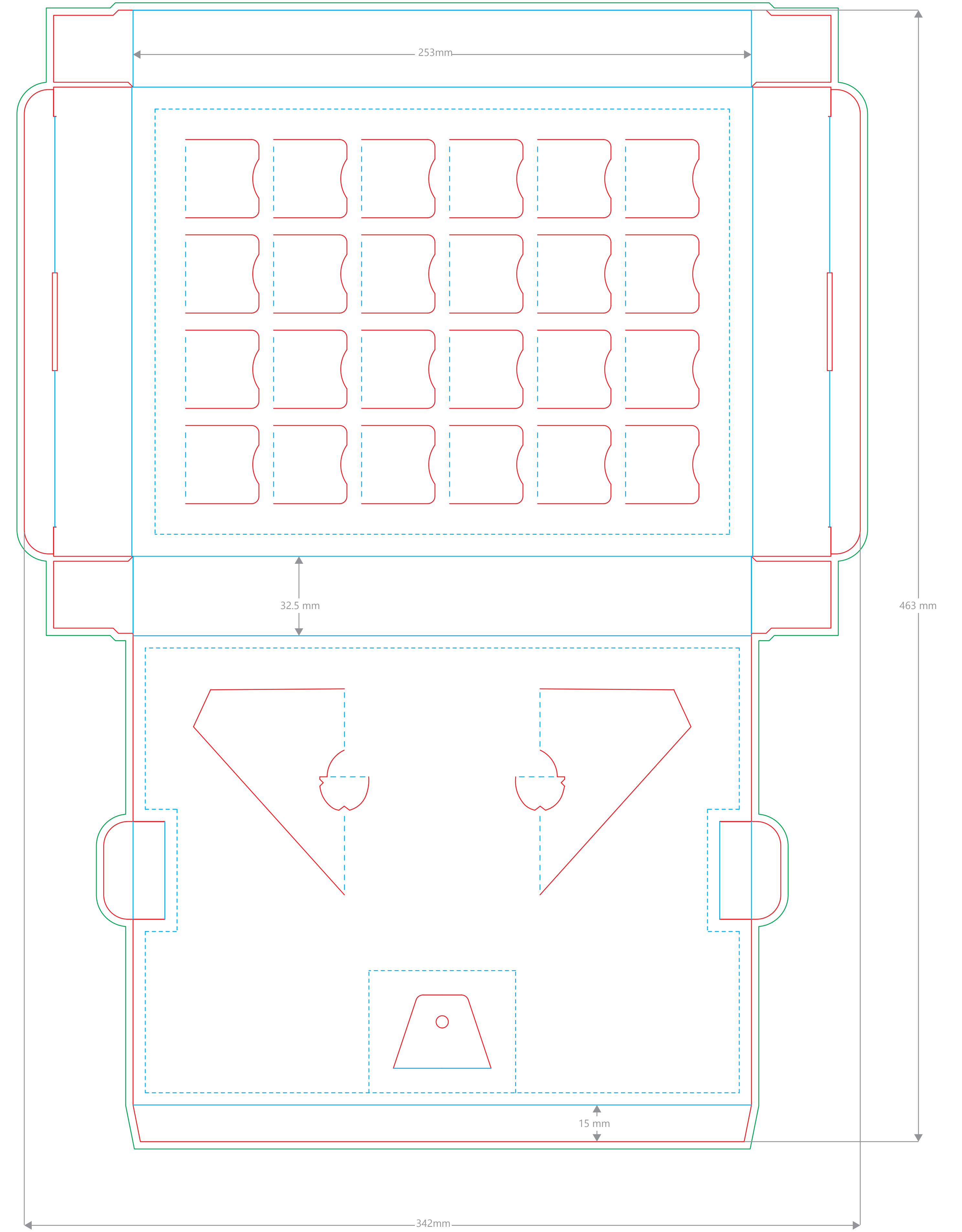
Chocolate type: **Milk**
Specification number: **REC 3.6.3 TRAYADVFOILED70G[1]**
Last updated: **15/07/2022**

cut lines ————
bleed size ————
folds ————

TRAY



SLEEVE



Helpful advice on preparing artwork

To ensure the best & quickest results when submitting your artwork here's a little list of things to bear in mind:

1. File Formats. We can accept various file formats for artwork including:

- .pdf** (portable document format)
 - .ai** (adobe illustrator file)
 - .eps** (encapsulated post script)
 - .bmp** (bitmap)
 - .png** (joint photographic experts group)
 - .svg** (portable network graphics)
 - .psd** (photoshop document)
- * Preferred formats

2. Resolution. Please use high resolution images. (we recommend 300 dots per inch as a minimum).

3. Text/Fonts. To avoid missing font issues please either:
Convert your text to outlines
or,
send the relevant font files with your artwork.

4. Template lines. Please create your artwork on a different layer to the cut, bleed and fold lines. If you're saving to a single layer file such as a .png then remove these lines when you have positioned your elements and before sending us your artwork.

5. Traceability
If your product is for resale, please don't forget this! (It's a legal requirement). Replace the text "Company Name" and "Company Postcode" with your company's name and postcode.
*If you're selling food in Great Britain (England, Wales and Scotland), you must also include the name and address of the UK or EU business responsible for the information on the food. If the business is not in the UK or EU you must include the name and address of the importer.
<https://www.gov.uk/food-labeling-and-packaging/food-labeling-what-you-must-show>

6 Door Numbers
Please double check that all numbers are present and that they are visible against the background image.

Reverse Print
If you are having print on the inside of the calendar doors you can use this same template but flipped to a mirror image for the reverse print. Don't forget the top left door then becomes the top right door!